

Bigroot Morningglory



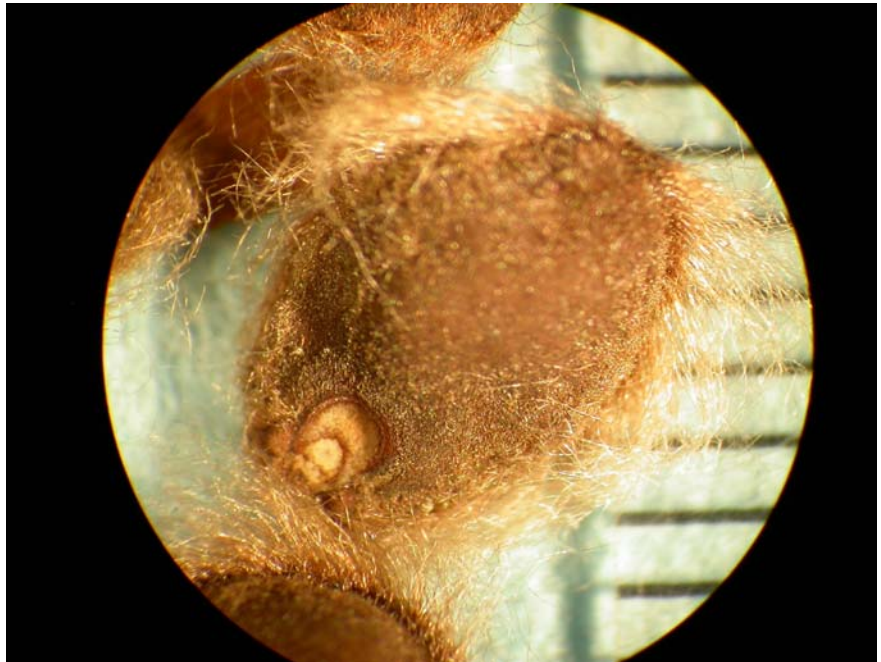
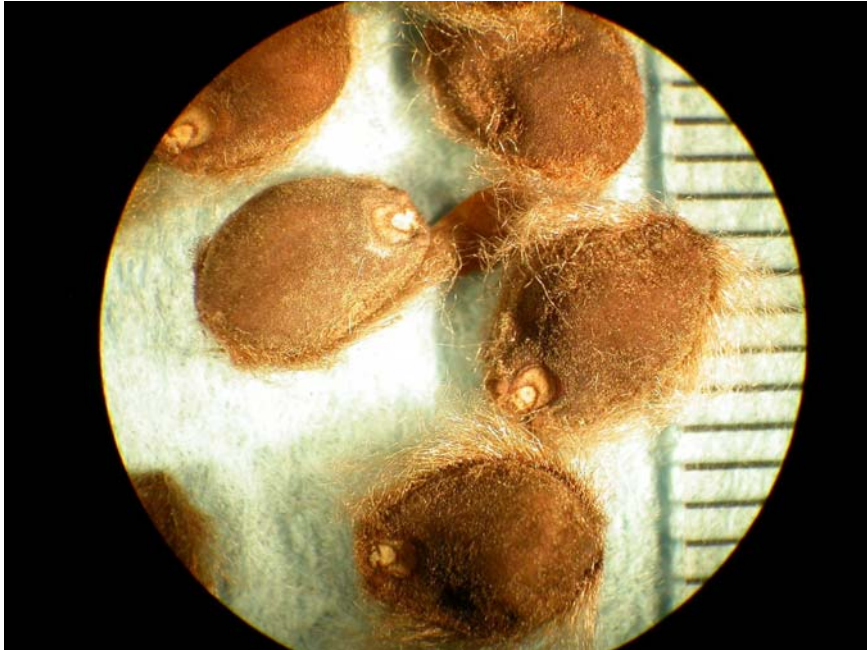
Foliage. Key characteristics: leaves may be unlobed and have prominent venation which gives it a "mattress" appearance.



Like annual morningglories, bigroot morningglory has a vining growth habit.



Flowers. Key characteristics: large tubular-shaped, white with purple centers.



Seed. Seed are reddish-brown, flattened and covered with long, soft hair.

Life cycle: perennial.