

Buffalobur



Foliage. Key characteristics: leaves are alternately arranged with irregularly lobed margins. Veins have dense, straight hairs.



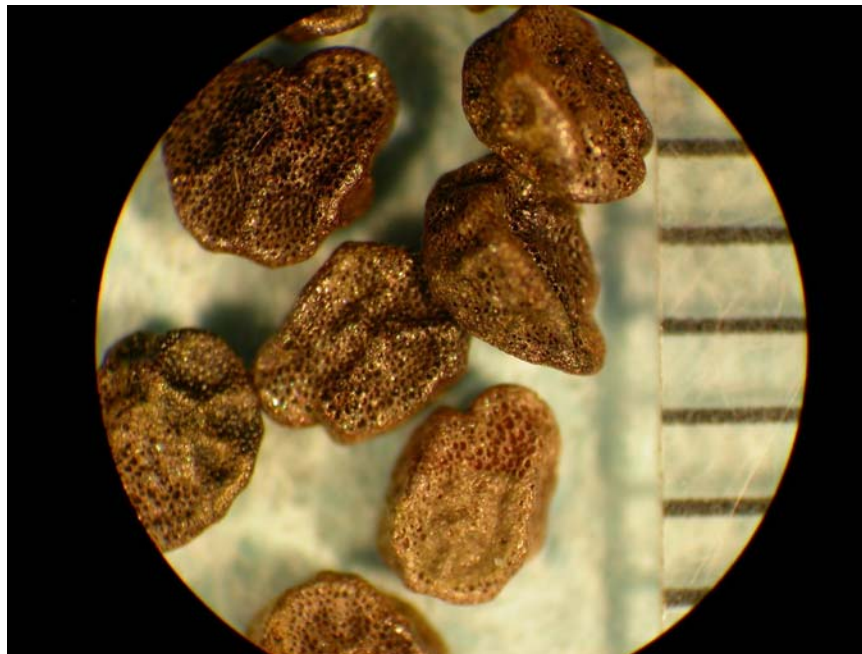
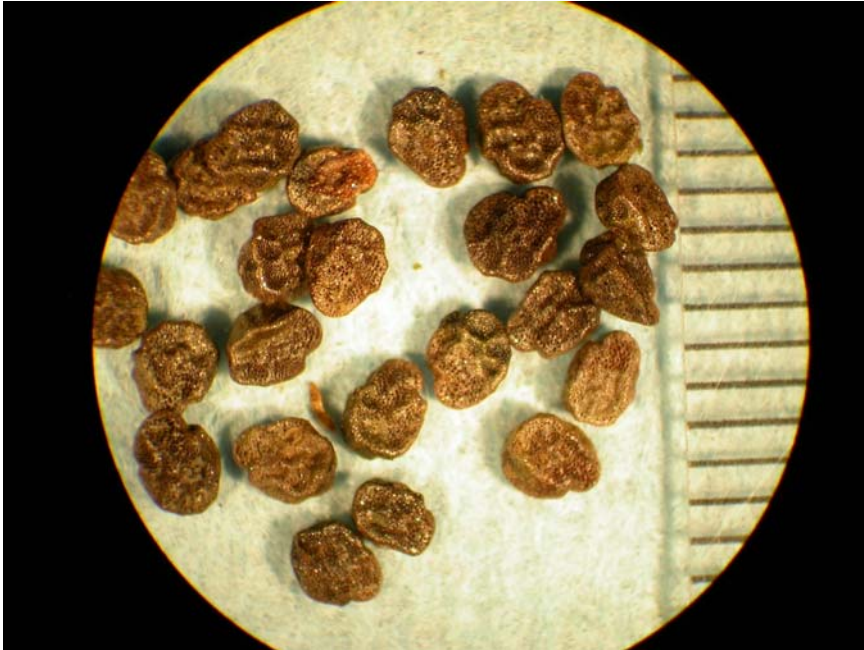
Stems. Note the stiff spines.



Fruit. Armed with stiff, yellow spines.



Habitat. Buffalobur is primarily a weed of pastures in Missouri.



Seed. Seed have a wrinkled texture, nearly black in color and the length is approximately 2.0 to 3.0 mm.

Life cycle: summer annual.