

# Carpetweed



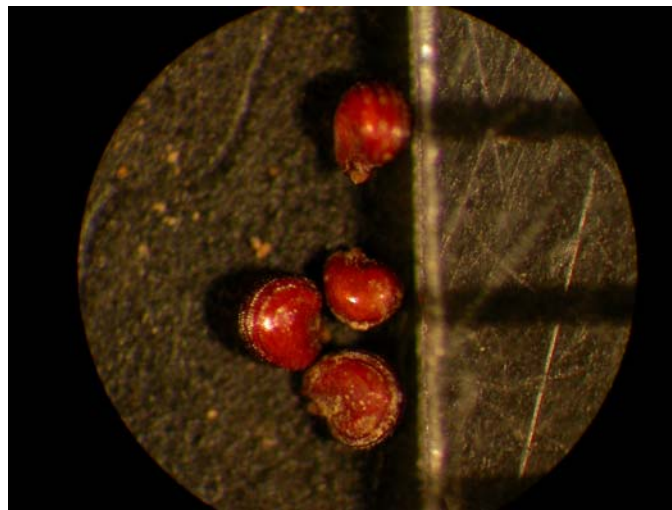
Seedling. Key characteristics: cotyledons are thick and spatula-shaped.



Vegetative plant. Key characteristics: leaves occur in whorls around the stems; plant grows along the soil surface producing mats.



Flowers. Key characteristics: very small, white.



A carpetweed seed is extremely small - less than 0.5mm in diameter.

Life cycle: summer annual.