

Clammy Groundcherry



Vegetative plants. Key characteristics: leaves and stems are covered with dense hair and the stems are often purple in color.



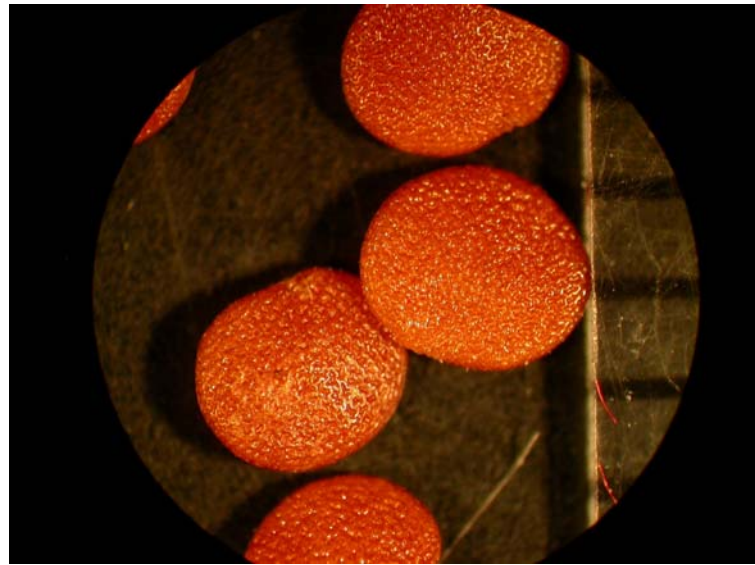
Closeup of foliage. Leaf margins have irregular teeth.



Flowers are yellow with purple centers.



Fruit is "hot-air balloon-like" in shape.



Seed. Seed have a rough texture, are flattened and nearly round in shape and bright yellowish-orange. Length and width is approximately 2.0 mm.

Life cycle: perennial.

Toxic Plant: although usually not a problem, cattle and horses have been reported to be affected after grazing. The toxic substance in the plant is known as solanine, an alkaloid. Many symptoms have been reported, including those affecting the gastrointestinal tract, cardiovascular and nervous systems.