

## Common Waterhemp



Seedlings. Key characteristics: cotyledons are very small and nearly linear.



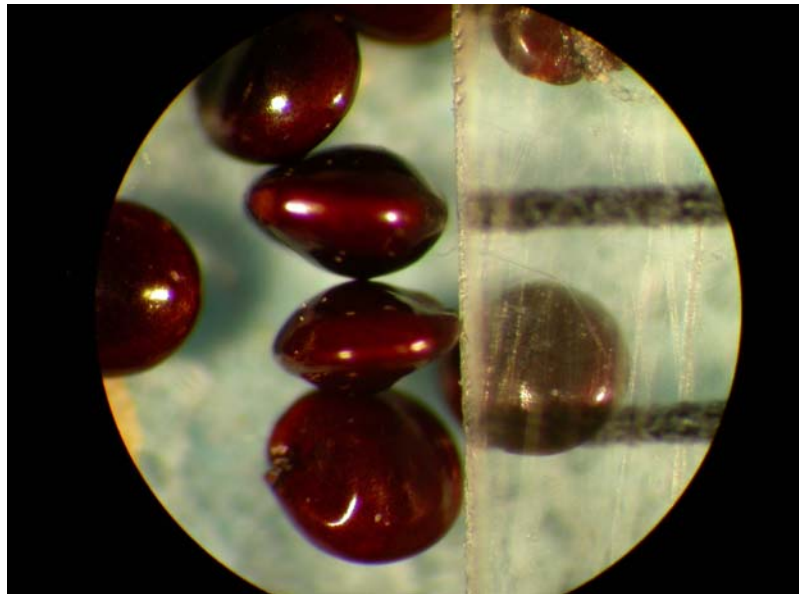
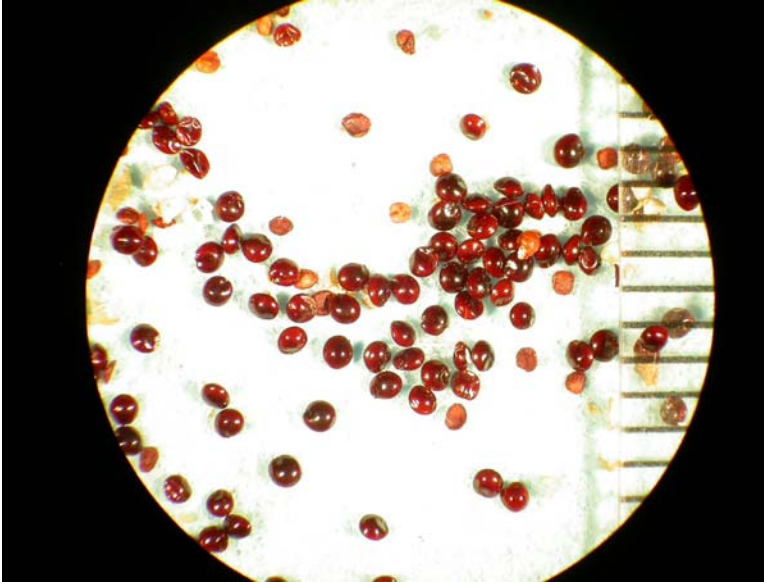
Vegetative plants. Key characteristics: leaves and stems are smooth giving the plant a glossy appearance. Leaves are longer and narrower than those of redroot pigweed.



Early season infestation of common waterhemp.



Stem color is highly variable in common waterhemp, ranging from yellowish-green to red or reddish-purple.



Seed. Seed are flattened and oval-shaped with a glossy shine. Diameter is slightly less than 1.0 mm.

**Toxic Plant:** Cattle and swine are the animals most likely to be affected; goats and sheep can also be poisoned. Leaves, stems and roots are toxic. The most common symptom in cattle is bloat as it accumulates nitrates.

Life cycle: summer annual.