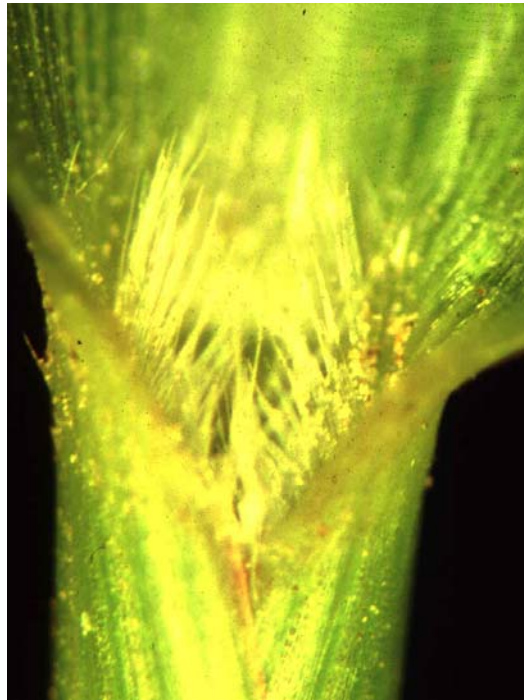
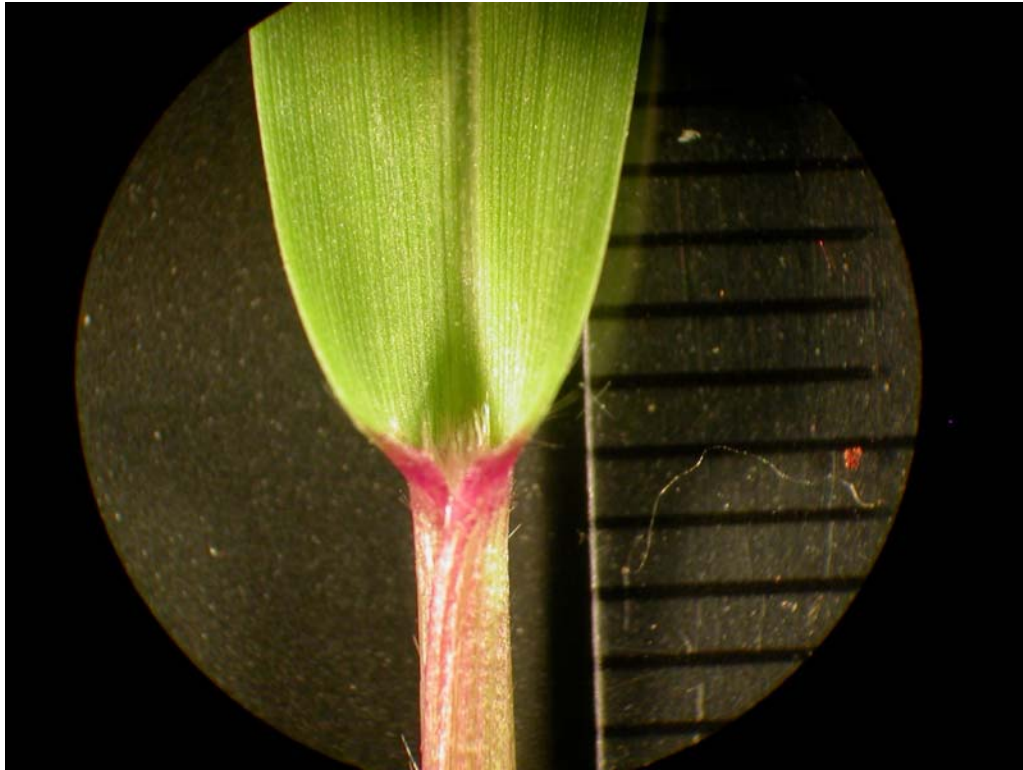


## Fall Panicum



Collar region. Key characteristics: ligule is a ring of hair.



Seedling plant. Key characteristics: first leaf may have hair on the bottom surface.



Vegetative plant. Key characteristics: very rounded stems and prominent leaf blade mid-veins.







Inflorescence. Key characteristics: the seedhead is a large, open, branched panicle.



Seed. Seed are 2.0 to 2.5 mm long.

Life cycle: summer annual.