

Goldenrod



Vegetative shoots. Key characteristics: shoots emerge from underground rhizomes in the early spring. Width of leaf and hairiness vary by species.



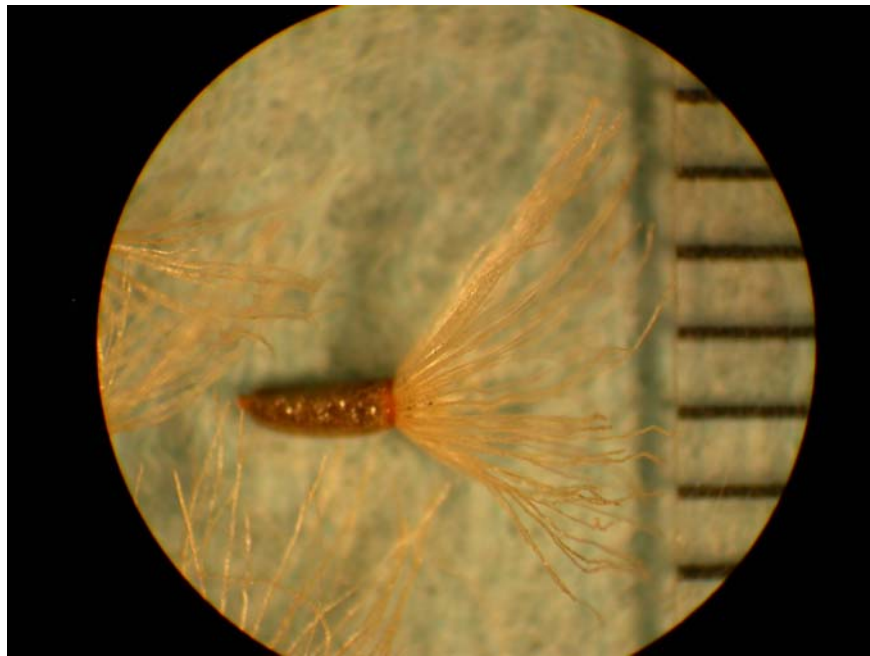
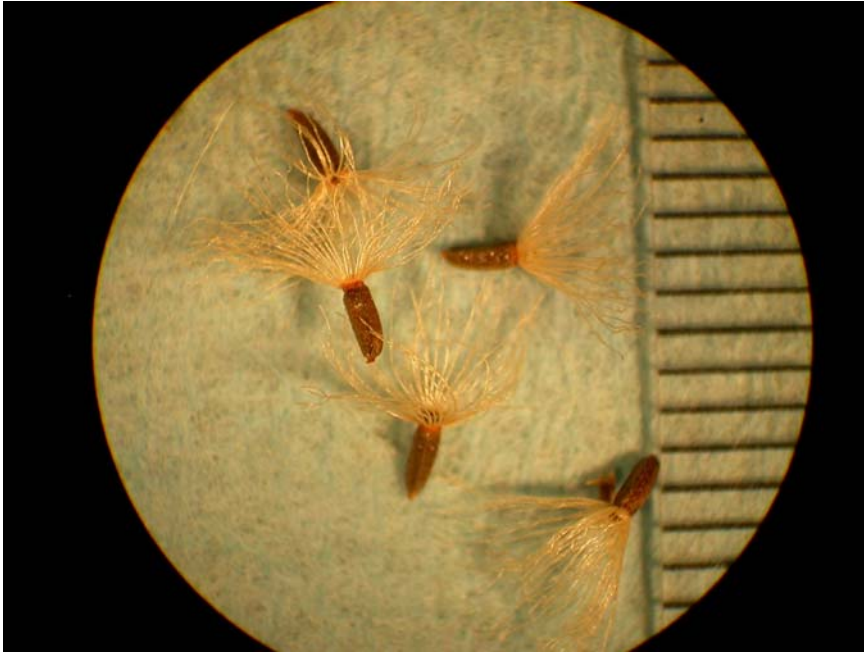
Flowering plant. Key characteristics: the plant is upright in its growth habit and produces yellow flowers.



Leaves. Key characteristics: alternate, lack petioles, have three main veins and leaf hair varies depending upon species.

Flower. All goldenrods have yellow flowers.





Seed (*Solidago altissima*). Seed have a feathery pappus attached and the length is approximately 2.0 mm (without the pappus).

Life cycle: perennial.