

Ivyleaf Morningglory



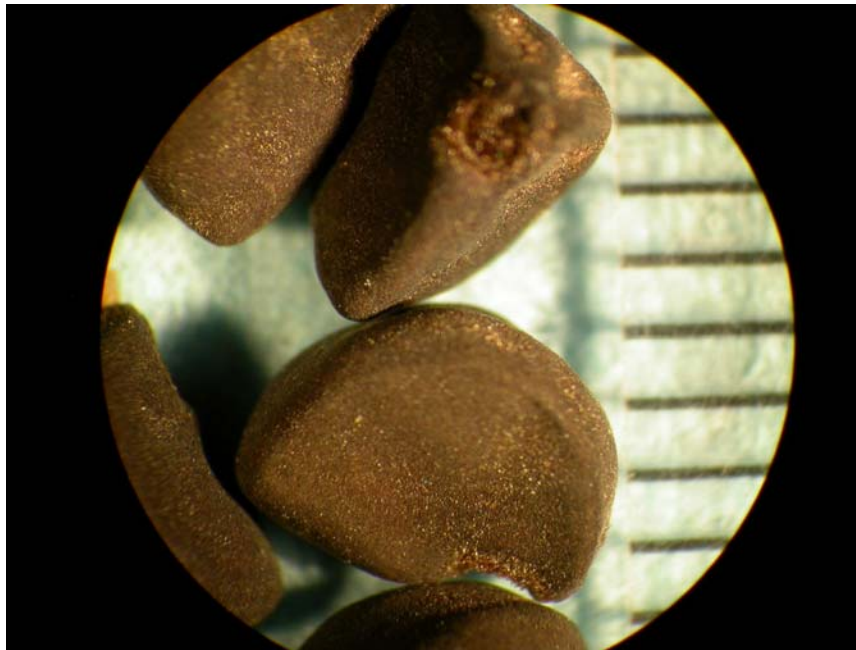
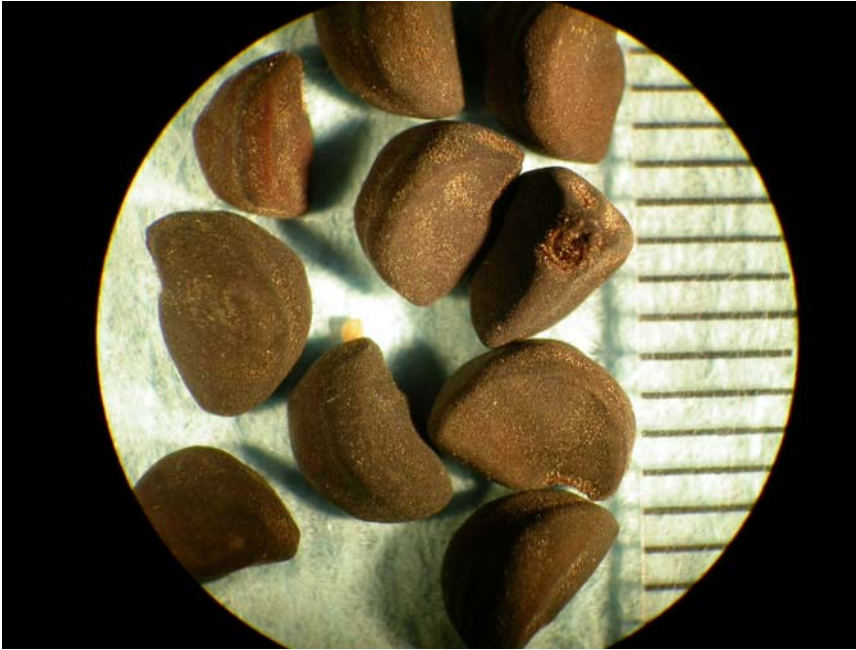
Cotyledons. Key characteristics: similar to tall morningglory; butterfly-shaped.



Seedling plant. Key characteristics: ivy-shaped leaves are covered with hairs.



Flowers. Key characteristics: funnel-shaped, range in color from blue to rose-purple.



Seed. Seed have two flattened sides and one rounded side. The seed have a rough texture and are approximately 5.0 mm long and 3.0 mm wide.

Life cycle: summer annual.