

Prostrate Pigweed



Cotyledons. Key characteristics: long and narrow-shaped.



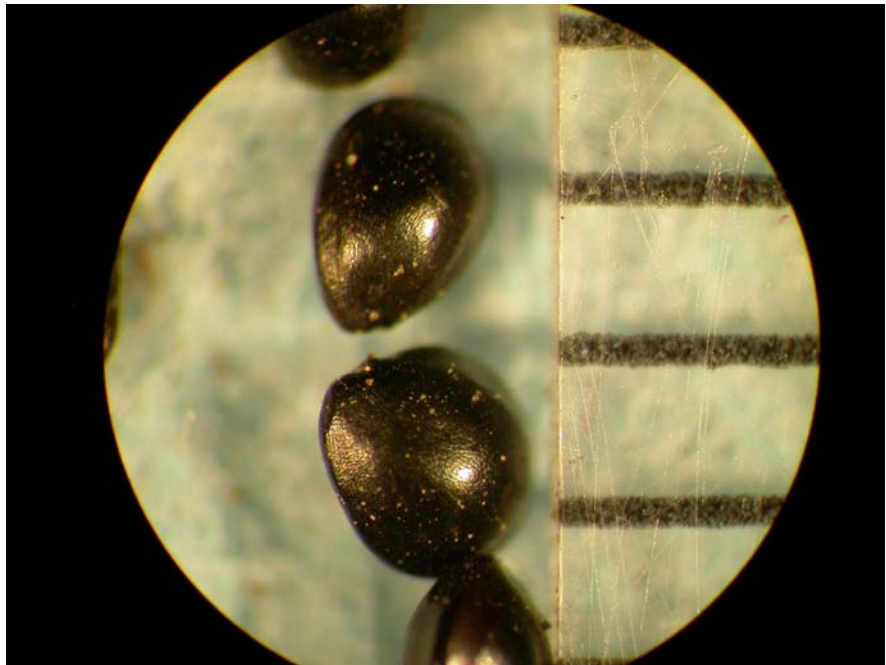
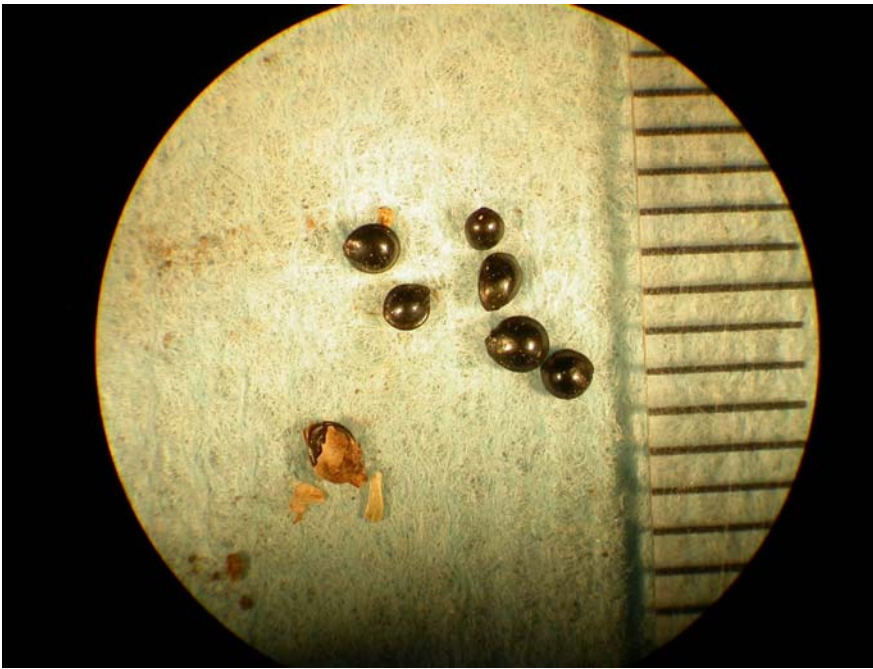
Seedling plant. Foliage is glossy.



Growth habit. Prostrate pigweed is a sprawling, mat-forming summer annual.



Vegetative plant. Key characteristics: leaves are tightly bunched, glossy and smooth.



Seed. Seed are round, flattened, glossy-black and approximately 1.0 mm in diameter.

Life cycle: summer annual.

Toxic Plant: Cattle and swine are the animals most likely to be affected; goats and sheep can also be poisoned. Leaves, stems and roots are toxic. The most common symptom in cattle is bloat as it accumulates nitrates.