

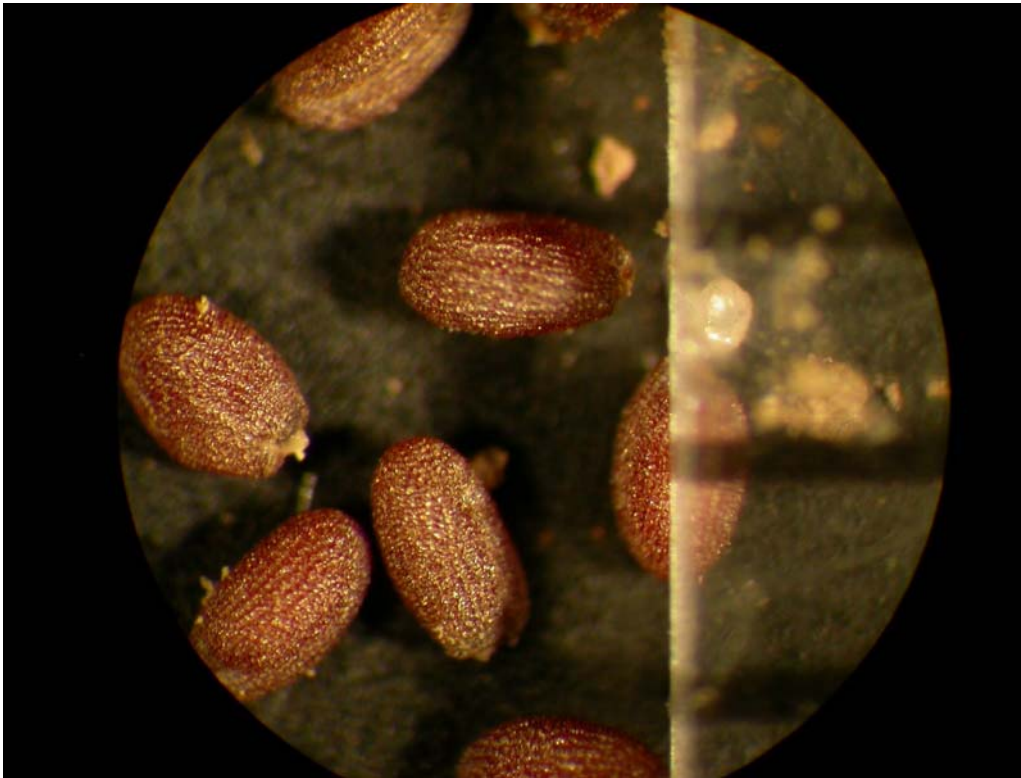
## Tansy Mustard



Vegetative growth. Key characteristics: leaves are alternate with the lower leaves deeply divided.



Flower and upper leaves. Flowers range in color from yellow to pale yellow and the upper leaves are not as deeply cut as those in the lower portion of the plant.



Seed. Seed are oblong with faint ridges and somewhat coarse-textured. Length is just under 1.0 mm.

Life cycle: winter annual.

**Toxic Plant:** all parts of the plant are considered toxic, especially the seeds which contain isoallyl thiocyanates, irritant oils, and under some conditions, nitrates. Symptoms of poisoning include oral and gastrointestinal irritation leading to head shaking, salivating, colic, abdominal pain, vomiting and possibly diarrhea. Generally, for problems to occur, large quantities have to be consumed over a period of time.