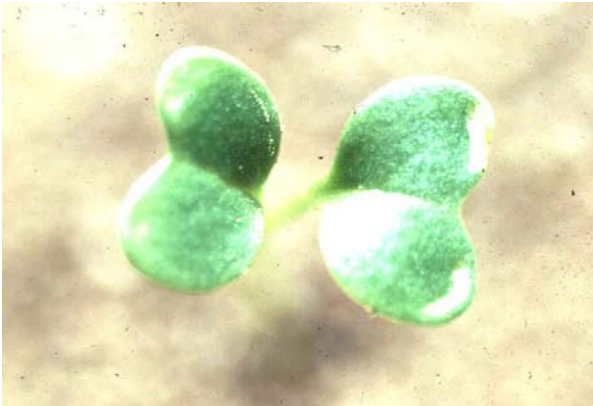


Wild Mustard



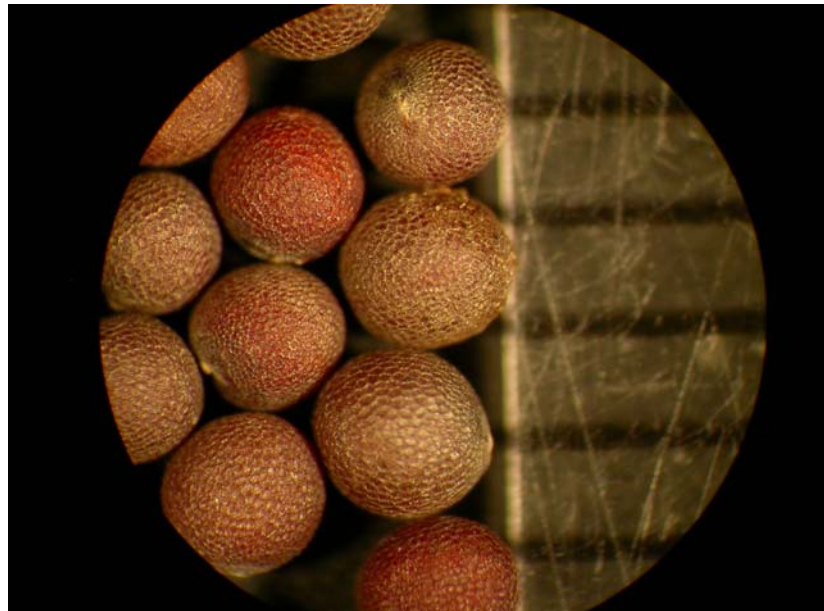
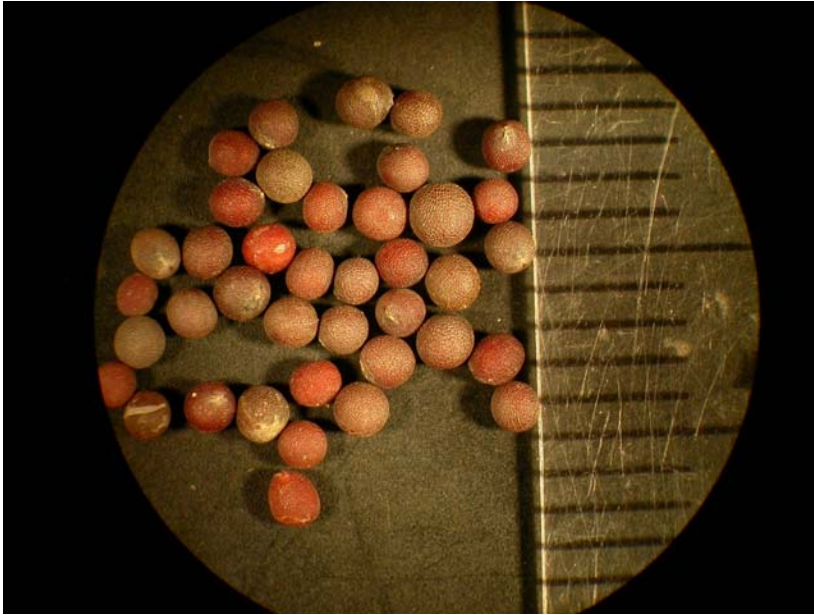
Cotyledons and first leaves. Key characteristics: cotyledons are kidney-shaped and attached to long petioles. Leaves emerge alternately.



Vegetative plant. Key characteristics: early growth forms a rosette. Leaves have a wavy appearance with lobes along the margins.



Flowering plants. Key characteristics: flowers are yellow, occur in clusters and each individual contains four petals.



Seed. Seed are round with a grainy textured surface and reddish-brown. Diameter is slightly greater than 1.0 mm.

Life cycle: winter annual.

Toxic Plant: all parts of the plant are considered toxic, especially the seeds which contain isoallyl thiocyanates, irritant oils, and under some conditions, nitrates. Symptoms of poisoning include oral and gastrointestinal irritation leading to head shaking, salivating, colic, abdominal pain, vomiting and possibly diarrhea. Generally, for problems to occur, large quantities have to be consumed over a period of time.